

# MULTIPACK

## Baling Presses



**Baling presses for all types** of recyclable materials such as plastic, cardboard, cans, film, etc.

- Single chamber system
- Multi chamber system
- Tin can press
- Barrel press

- Semi-automatic channel baling presses
- Fully-automatic channel baling presses

# MULTIPACK VERTICAL BALING PRESS



**The perfect solution** for smaller and larger quantities of waste in tight spaces for supermarkets, restaurants, hotels, workshops, etc.

## SINGLE CHAMBER MULTIPACK 820 / 840 / 850

These power packs were especially developed to obtain higher bale weights with minimum space requirement and in doing so set new standards where economy is concerned.

Pallet sized bales up to 500 kg for direct marketing can be made with a MULTIPACK 840 or 850.



## SINGLE CHAMBER SYSTEM MULTIPACK 500 / 600

The small do-it-all for supermarkets, restaurants, hotels and workshops that have bulky refuse to dispose of and limited space available.





## MULTI CHAMBER SYSTEM MULTIPACK 700 / 720

Compacting and sorting in one with the multichamber presses from PÖTTINGER.

Install your domestic waste material centre in the smallest space.



## MULTIPACK 650

The waste press for standard containers of 660 to 1100 litres. Optimum container utilisation is guaranteed through the impressive compacting factor of 3:1.



## SACK PRESS MULTIPACK 660

The clean and hygienic solution for mixed refuse material. This sack press was designed for use especially in catering businesses and hospitals.



## TIN CAN PRESS MULTIPACK 610 / 620

The can press for all metal and plastic packing up to 60 litres. The tremendous compaction of up to 20:1, the minimum space required as well as simple and clean operation make this MULTIPACK an indispensable component in painting businesses, auto workshops, restaurants, etc.



## BARREL PRESS MULTIPACK 630 / 640

Steel drums of up to 200 litres are compacted effortlessly with a factor of 20:1.

# MULTIPACK HORIZONTAL BALING PRESS



The horizontal channel baling presses are ideal for industrial operation, furniture stores and distribution warehouses as well as for recycling centres in **communal areas**.

Thanks to its power and high degree of automation, very high performance can be achieved. It can be used for valuable secondary raw materials such as paper, cardboard, plastic, film and hollow bodies.

**MULTIPACK 3000 HA**  
SEMI AUTOMATIC  
BALING CHANNEL  
PRESSES



## THE BIGGEST ADVANTAGE

of this baling channel press with a compression force of 12 to 36 tonnes is the possibility of filling it continually. A special construction of the press guiding plate with two cutting knives and a photo electrical sensor enable the machine to work without interruption.



## MULTIPACK 2000 – HORIZONTAL BALING PRESSES WITH COUNTER PLATE

Highly versatile horizontal baling presses with a compression force of 9 to 40 tonnes, which creates up to 500 kg heavy bale. Thanks to its power and high degree of automation very high performance is reached. The presses are used by industrial plants, large warehouses, large logistic centres as well as large furniture stores etc.

Optionally the press can be equipped with a lifting and tilting system which is ideal for waste collecting centres in cities.



## MULTIPACK 3000A – HORIZONTAL FULLY AUTOMATIC CHANNEL BALING PRESS

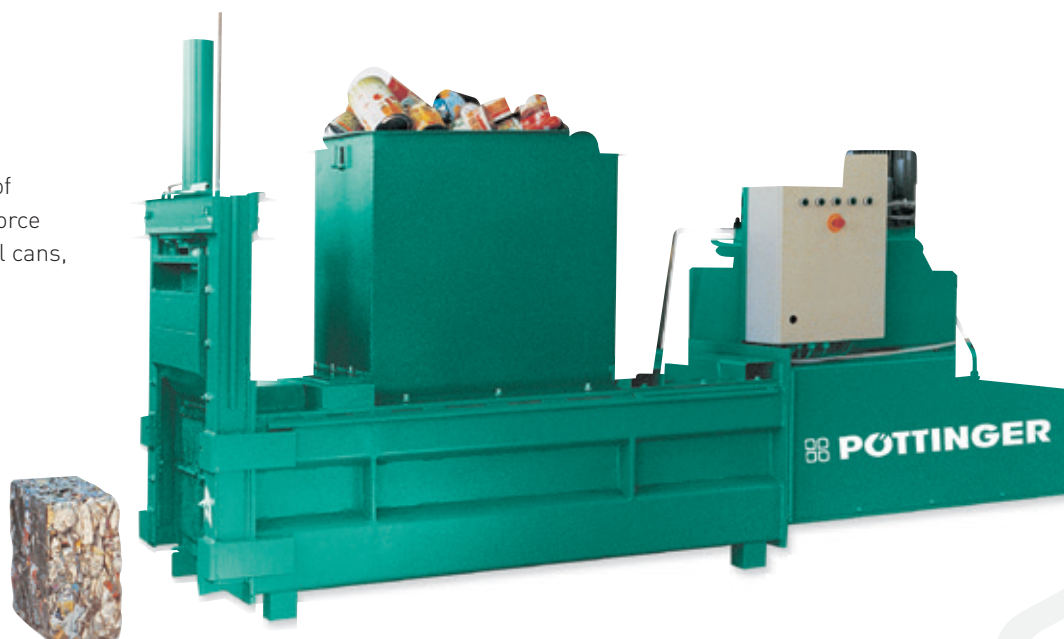
The fully automatic PÖTTINGER MULTIPACK channel baling press with a high throughput performance and bale weights up to 600 kg is the ideal prerequisite for economical, future-oriented disposal.

In combination with an optimum material feed (conveyor belt or air channel technique), valuable secondary raw materials such as paper, cardboard, film, hollow bodies and other packaging materials are crushed into highly compressed, compact, easily stackable and transportable bales.



## MULTIPACK 4000 CAN PRESS

Electro-hydraulic versions of can presses with pressing force up to 70 t for pressing metal cans, screw caps, tins and tubes.



# TECHNICAL DOCUMENTATION

## VERTICAL BALING PRESSES

TYPE	Compression pressure	Motor	Pressing time incl. return	Loading size	Filling opening	Pressing box W x D x H	Bale format	Bale weight
	kN	kW / V / Hz	sec.	mm	mm	mm	mm	kg
MP 500	50	1,5 / 400 / 50	20	1020	650 x 450	650 x 450 x 850	650 x 450 x 450	30 - 60
MP 600	60	1,5 / 400 / 50	25	1070	700 x 500	700 x 500 x 900	700 x 500 x 500	40 - 80
MP 820	160	4,0 / 400 / 50	24	850	1100 x 600	1100 x 700 x 1250	1100 x 700 x 800	100 - 220
MP 840	300	5,5 / 400 / 50	35	1100	1090 x 570	1200 x 800 x 1550	1200 x 800 x 1000	300 - 400
MP 850	500	7,5 / 400 / 50	40	1100	1090 x 570	1200 x 800 x 1550	1200 x 800 x 1000	300 - 500
MP 700/ II	60	1,5 / 400 / 50	25	1050	700 x 500	700 x 500 x 850	700 x 500 x 500	40 - 80
MP 720/ II	200	4,0 / 400 / 50	24	1420	1100 x 700	1100 x 700 x 1150	1100 x 700 x 800	150 - 250

TYPE	Recommended daily performance	Maximum baling performance	Vertical binding	Binding tape	Binding wire	Width	Depth x height	Weight	Fuse slow
	bals / day	bals / hour		mm	mm	mm	mm	kg	A
MP 500	5 - 10	2 - 3	2 v	9	-	920	1110 x 1880	345	12
MP 600	5 - 10	2 - 3	2 v	9	-	970	1200 x 1950	400	12
MP 820	5 - 10	2 - 3	4 v	13	-	1580	930 x 1950	1140	16
MP 840	5 - 10	2 - 3	4 v	16	2,5	1620	1250 x 2920	1695	16
MP 850	5 - 10	2 - 3	4 v	19	2,5	1620	1250 x 2920	2180	25
MP 700/ II	5 - 10	2 - 3	2 v	9	-	1800	850 x 1970	616	12
MP 720/ II	5 - 10	2 - 3	4 v	13	-	2520	1200 x 2500	1640	16

## SPECIAL PRESSES

TYPE	Compression pressure	Motor	Weight	External measurements	Max. barrel diameter	Performance	Height With bag change
	kN	kW / V / Hz	kg	L x W x H / mm	mm	Units/h	mm
MP 610 A	70	1,5 / 400 / 50	285	630 x 810 x 2150	400 x 500	80	-
MP 620 A	100	1,5 / 400 / 50	320	630 x 810 x 2150	400 x 620	50	-
MP 630	200	4 / 400 / 50	770	1000 x 890 x 2450	700 x 950	60	-
MP 640	270	5,5 od. 7,5 / 400 / 50	940 - 970	1000 x 940 x 2470	700 x 950	50/60	-
MP 650	40	1,5 / 400 / 50	350	1540 x 1650 x 2370	-	-	-
MP 660	30	1,5 / 400 / 50	350	700 x 1260 x 1920	-	-	2550

TYPE	Compression pressure	Specific Compression	Motor	Filling opening	Bale size	Theoretical Performance	Performance with tinplate cans	External measurements / L x B x H	Weight
	kN	N/cm <sup>2</sup>	kW / V / Hz	mm	mm	m <sup>3</sup> /h	kg/h	mm	kg/h
MP 4250 A	320	150	7,5 / 400 / 50	600 x 320	400 x 400 x 200 - 300	6	200 - 300	3400 x 900 x 1800	1750
MP 4680 A	680	400	22 / 400 / 50	400 x 800	450 x 450 x 200 - 500	20	1700 - 2200	5200 x 1500 x 2200	5500
MP 4800 A	800	470	45 / 400 / 50	1400 x 900	450 x 450 x 200 - 500	50	2000 - 3000	5700 x 2400 x 3500	8820
MP 4900 A	1100	470	45 / 400 / 50	1400 x 900	500 x 500 x 200 - 400	70	4500	6500 x 2450 x 3700	9990

## HORIZONTAL BALING PRESS

TYPE	Compression pressure	Motor	Press box/ specific pressing	Fill height	Pressing time incl. return stroke	Bale weight	Binding v=vertical, h=horizontal	Weight
	kN	kW / V / Hz	mm	mm	sec.	kg		kg
MP 2100	100	4 / 400 / 50	700 x 550 x 1700	750	25	80 - 140	3 x v	1050
MP 2120	120	4 / 400 / 50	800 x 600 x 1500	820	35	120 - 150	3 x v	1240
MP 2140	140	5,5 / 400 / 50	800 x 600 x 2000	820	40	150 - 200	3 x v	1370
MP 2160	160	7,5 / 400 / 50	800 x 750 x 2200	960	40	200 - 250	3 x h	1660
MP 2250/ 25	250	7,5 / 400 / 50	1000 x 750 x 2500	1000	40	200 - 300	3 x h	3150
MP 2350	350	15 / 400 / 50	800 x 1000 x 3150	1250	50	300 - 400	5 h	4950
MP 2400	400	22 / 400 / 50	800 x 1000 x 3150	1250	60	400 - 600	5 h	5400
MP 2350 S	350	11 od. 15 / 400 / 50	58 N/cm <sup>2</sup>	1600	40/60	150 - 300	4 v	6200
MP 2420 S	420	11 od. 22 / 400 / 50	56 N/cm <sup>2</sup>	1600	40/60	250 - 450	4 v	7200
MP 2550 S	550	22 / 400 / 50	50 N/cm <sup>2</sup>	1600	70	500 - 800	4 v + 2 h optional	11000

TYPE	External dimensions			Filling opening		Bale size		
MP 2100	3840	1075	1000 [1870]	1000	700	700	550	1200
MP 2120	3570	1170	1040 [1900]	1200	800	800	600	800
MP 2140	4700	1170	1040 [2105]	1200	800	800	600	1200
MP 2160	4910	1320	1155 [1870]	1400	800	800	750	1200
MP 2250/ 25	5800	1700	1850	1500	940	1000	750	1200
MP 2350	7200	1560	2100	1500	740	800	1000	1400
MP 2400	7200	1560	2100	1500	740	800	1000	1400
MP 2350 S	6400	1300	2500	1200	740	800	750	1200
MP 2420 S	6400	1500	2500	1200	940	1000	750	1200
MP 2550 S	7600	1600	2700	1400	1040	1100	1000	1200

## SEMI-AUTOMATIC CHANNEL BALING PRESSES

TYPE	Compression pressure	Motor	Press box/ specific pressing	Fill height	Pressing time incl. return stroke	Bale weight	Binding v=vertical, h=horizontal	Weight
	kN	kW / V / Hz	N/cm <sup>2</sup>	mm	sec.	kg		kg
MP 3120 HA	120	4 / 400 / 50	40,0	1600	40	80 - 100	2 x h	1450
MP 3280 HA	280	11 / 400 / 50	46,6	1600	50	150 - 250	3 x h	3500
MP 3360 HA	360	15 / 400 / 50	48,0	1600	50	250 - 400	4 x h	4800

TYPE	External dimensions			Filling opening		Bale size		
MP 3120 HA	4200	1400	1800	600	520	600	500	1200
MP 3280 HA	5700	1500	2000	1250	720	800	750	1200
MP 3360 HA	6200	1600	2000	1250	920	1000	750	1200

## FULLY-AUTOMATIC CHANNEL BALING PRESSES

TYPE	Compression pressure	Motor	Specific Compression pressure	Theoretical pressing performance	Bale weight	Binding v=vertical, h=horizontal	Additional binding	Weight
	kN	kW	N/cm <sup>2</sup>	m <sup>3</sup> /h	kg			kg
MP 3100 A	210 - 320	7,5 - 22	40 - 60	65 - 180	150 - 350	3 h or 3 v	2 h optional	5400 - 5800
MP 3200 A	320 - 420	15 - 30	53 - 70	160 - 270	200 - 400	3 v/4 v or 3 h/4 h	2 h optional	8100 - 8900
MP 3300 A	420 - 650	22 - 45	56 - 87	135 - 390	350 - 600	4 v or 3 h	2 h optional	12900 - 14400
MP 3400 A	550 - 800	22 - 2 x 45	66 - 97	160 - 410	400 - 600	4 v or 5 v	2 h optional	14100 - 18400
MP 3410 A	700 - 1050	55 - 3 x 55	85 - 127	340 - 680	400 - 700	5 v	2 h optional	21000 - 26000
MP 3500 A	1050 - 1350	2 x 55 - 3 x 55	87 - 112	500 - 1010	800 - 1300	5 v or 5 h	3 h optional	28000 - 32000
MP 3600 A	550 - 850	30 - 2 x 45	62,5 - 96	160 - 430	400 - 800	5 h	-	14600 - 21200

TYPE	Filling opening		Bale size*		
MP 3100 A	640	450 - 800	700	750	1200
MP 3200 A	740	800 - 1250	800	750	1200
MP 3300 A	920	1400	1000	750	1200
MP 3400 A	1020	1400 - 1700	1100	750	1200
MP 3410 A	1020	1700 - 2000	750	1100	1200
MP 3500 A	1020	2000	1100	1100	1200
MP 3600 A	720	1400 - 1700	1100	800	1200

\* Variable bale length!

**PÖTTINGER Entsorgungstechnik GmbH**

Moos 31

4710 Grieskirchen / Austria

Telefon +43-7248-9001-8090

Telefax +43-7248-9001-2429

[entsorgung@poettinger.at](mailto:entsorgung@poettinger.at)



[www.poettinger-oneworld.at](http://www.poettinger-oneworld.at)